

Meat Market Observatory - Pig

EU Trade of PIG products



Last update : 20.02.2018

➔ [Imports](#)

Exports in Tons

Carcase weight	2012		2013		2014		2015		Jan-Dec 17		Compared to Jan-Dec 16
	tonnes	%	tonnes	%	tonnes	%	tonnes	%	tonnes	%	
China	668 386	20.6%	717 033	23.6%	1 141 306	33.9%	1 866 346	44.9%	1 389 035	36.4%	- 25.6%
Japan	261 324	8.1%	347 721	11.5%	364 746	10.8%	405 366	9.8%	425 878	11.2%	+ 5.1%
Hong Kong	388 049	12.0%	408 183	13.5%	292 391	8.7%	362 494	8.7%	378 701	9.9%	+ 4.5%
South Korea	108 482	3.3%	227 825	7.5%	241 569	7.2%	260 748	6.3%	274 264	7.2%	+ 5.2%
Philippines	102 348	3.2%	202 522	6.7%	191 876	5.7%	216 282	5.2%	249 419	6.5%	+ 15.5%
USA	64 710	2.0%	90 985	3.0%	105 123	3.1%	116 840	2.8%	155 550	4.1%	+ 33.2%
Australia	51 467	1.6%	73 156	2.4%	102 645	3.0%	101 198	2.4%	95 327	2.5%	- 5.8%
Ukraine	125 540	3.9%	106 780	3.5%	96 631	2.9%	75 696	1.8%	88 105	2.3%	+ 16.4%
Taiwan	11 540	0.4%	52 970	1.7%	53 701	1.6%	47 865	1.2%	63 984	1.7%	+ 33.7%
Serbia	28 336	0.9%	62 905	2.1%	47 488	1.4%	41 164	1.0%	55 075	1.4%	+ 33.9%
Vietnam	3 269	0.1%	16 056	0.5%	38 290	1.1%	53 534	1.3%	41 522	1.1%	- 22.4%
Ivory Coast	35 107	1.1%	39 773	1.3%	49 766	1.5%	36 434	0.9%	41 359	1.1%	+ 13.7%
Singapore	28 828	0.9%	40 265	1.3%	40 937	1.2%	40 000	1.0%	37 359	1.0%	- 6.6%
South Africa	21 650	0.7%	24 235	0.8%	32 298	1.0%	28 094	0.7%	34 915	0.9%	+ 24.3%
Thailand	23 211	0.7%	34 382	1.1%	35 143	1.0%	35 112	0.8%	31 205	0.8%	- 11.1%
Angola	56 984	1.8%	62 903	2.1%	50 133	1.5%	29 934	0.7%	30 843	0.8%	+ 3.0%
New Zealand	14 902	0.5%	23 090	0.8%	30 164	0.9%	34 259	0.8%	30 161	0.8%	- 12.0%
Other Destinations	1 248 258	38.5%	503 048	16.6%	454 036	13.5%	405 246	9.7%	396 652	10.4%	
Extra-EU	3 242 390		3 033 833		3 368 242		4 156 611		3 819 353		
% change			- 6%		+ 11%		+ 23%		- 8.1%		

Source : Estat - Comext

Page



Next

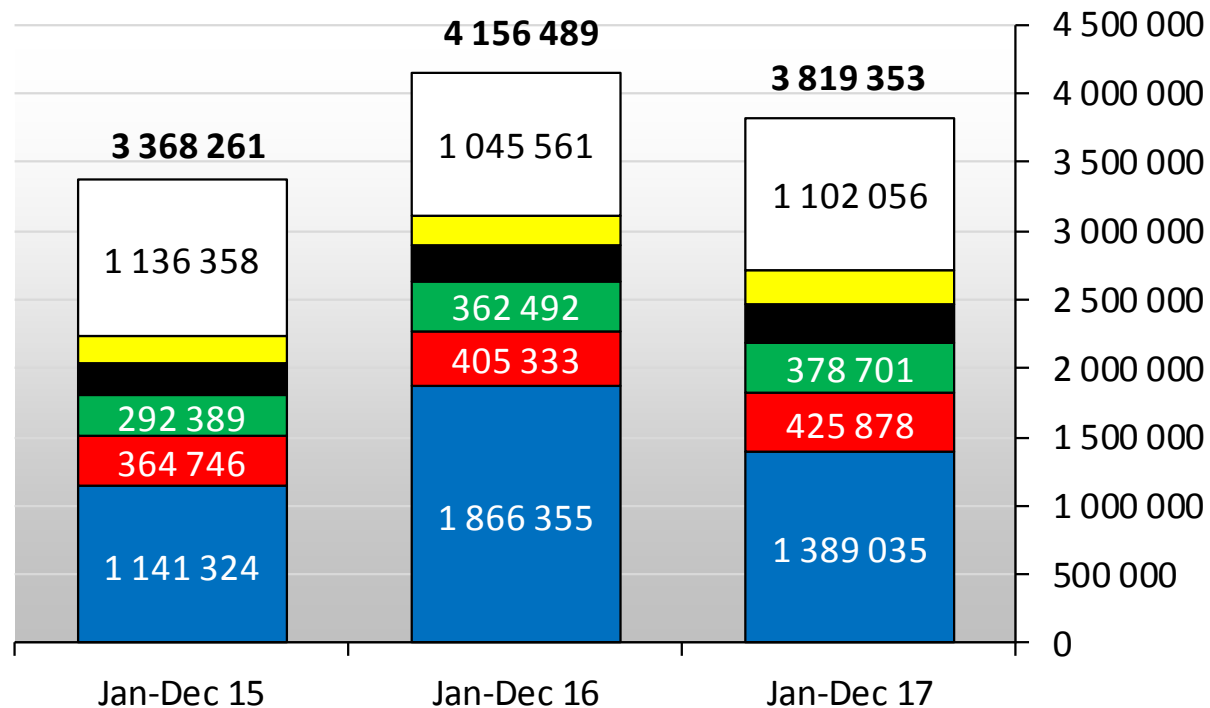
Meat Market Observatory - Pig

EU Trade of PIG products



EU-28 EXPORTS of PIG Meat (Tonnes carc. weight)

Tons (cw)



Meat Market Observatory - Pig

EU Trade of PIG products



Exports in 1000 EUR

in 1000 EUR	2012		2013		2014		2015		Jan-Dec 17		Compared to Jan-Dec 16
	1000 EUR	%	1000 EUR	%	1000 EUR	%	1000 EUR	%	1000 EUR	%	
Japan	866 814	14.2%	1 072 104	19.0%	1 096 010	17.7%	1 356 040	17.2%	1 424 041	18.3%	+ 5.0%
Hong Kong	531 800	8.7%	585 254	10.4%	399 300	6.4%	545 339	6.9%	682 106	8.8%	+ 25.1%
South Korea	238 381	3.9%	518 626	9.2%	521 971	8.4%	634 963	8.1%	726 872	9.4%	+ 14.5%
China	851 106	13.9%	888 710	15.8%	1 651 653	26.6%	2 809 065	35.6%	2 062 234	26.5%	- 26.6%
USA	282 975	4.6%	355 386	6.3%	452 116	7.3%	480 443	6.1%	595 740	7.7%	+ 24.1%
Belarus	193 543	3.2%	12 119	0.2%	1 543	0.0%	411	0.0%	1 171	0.0%	+ 185.3%
Australia	151 020	2.5%	195 032	3.5%	251 014	4.0%	244 318	3.1%	258 084	3.3%	+ 5.6%
Ukraine	167 520	2.7%	88 457	1.6%	53 064	0.9%	42 467	0.5%	59 493	0.8%	+ 40.2%
Philippines	118 683	1.9%	212 256	3.8%	177 104	2.9%	219 827	2.8%	298 435	3.8%	+ 36.0%
Angola	130 040	2.1%	140 096	2.5%	102 403	1.7%	67 803	0.9%	68 802	0.9%	+ 1.5%
Switzerland	117 946	1.9%	116 184	2.1%	111 396	1.8%	115 272	1.5%	112 584	1.4%	- 2.2%
Singapore	65 622	1.1%	85 752	1.5%	91 773	1.5%	91 683	1.2%	97 409	1.3%	+ 6.3%
South Africa	37 404	0.6%	44 498	0.8%	57 685	0.9%	51 427	0.7%	61 080	0.8%	+ 18.8%
Montenegro	47 132	0.8%	76 254	1.4%	42 540	0.7%	44 964	0.6%	48 547	0.6%	+ 8.0%
New Zealand	40 459	0.7%	56 898	1.0%	68 974	1.1%	74 270	0.9%	77 100	1.0%	+ 3.8%
Taiwan	13 771	0.2%	85 693	1.5%	92 669	1.5%	93 110	1.2%	137 732	1.8%	+ 47.9%
Congo (Dem. Rep.)	16 633	0.3%	27 078	0.5%	22 220	0.4%	16 112	0.2%	15 578	0.2%	- 3.2%
Other Destinations	2 244 031	36.7%	1 081 632	19.2%	1 005 614	16.2%	992 904	12.6%	1 045 976	13.5%	
Extra-EU	6 114 878		5 642 028		6 199 052		7 880 417		7 772 983		
% change			- 8%		+ 10%		+ 27%		- 1.4%		

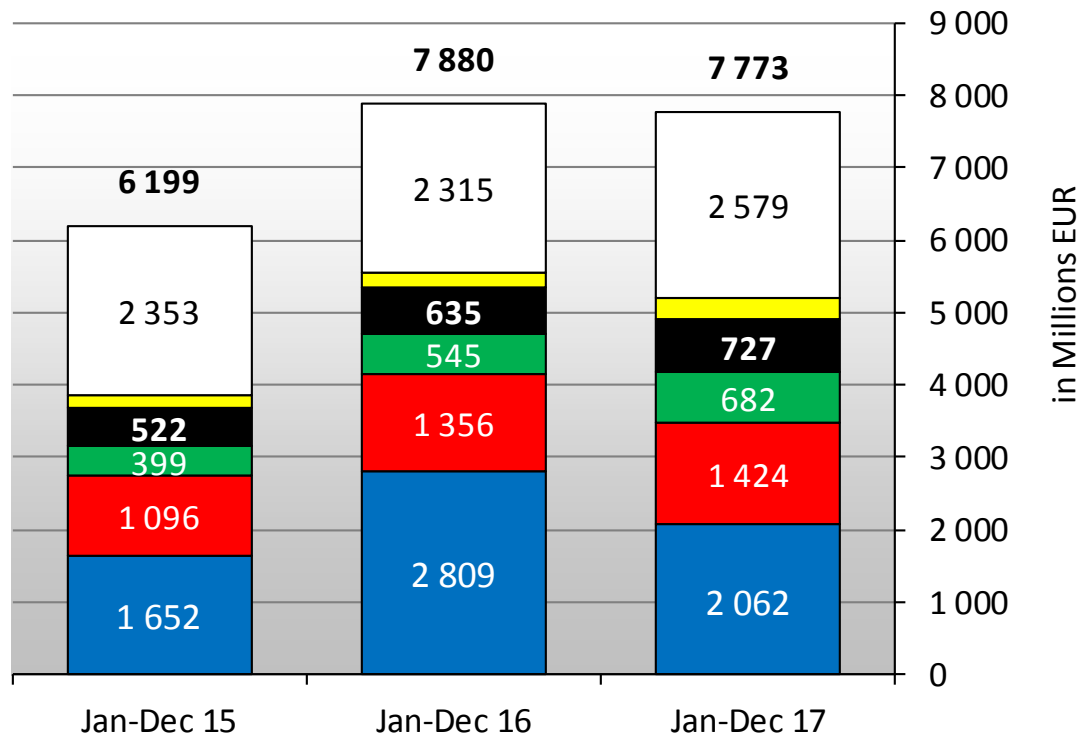
Source : Estat - Comext

Meat Market Observatory - Pig

EU Trade of PIG products



EU-28 EXPORTS of PIG Meat (Millions EUR)

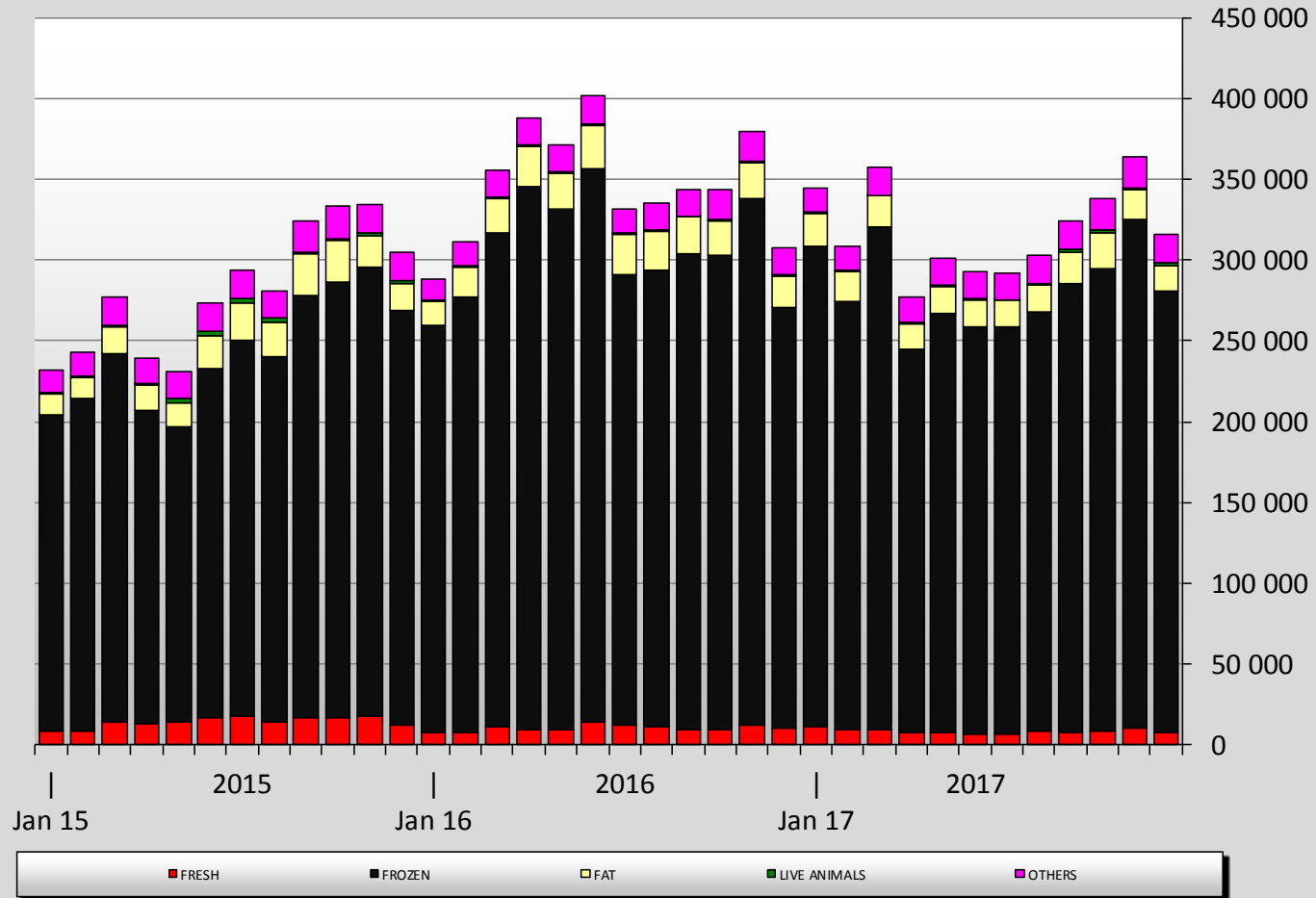


■ China ■ Japan ■ Hong Kong ■ South Korea ■ Philippines □ Other



EU Exports of selected PIG products

in Tonnes
(carcase weight)



Meat Market Observatory - Pig

EU Trade of PIG products



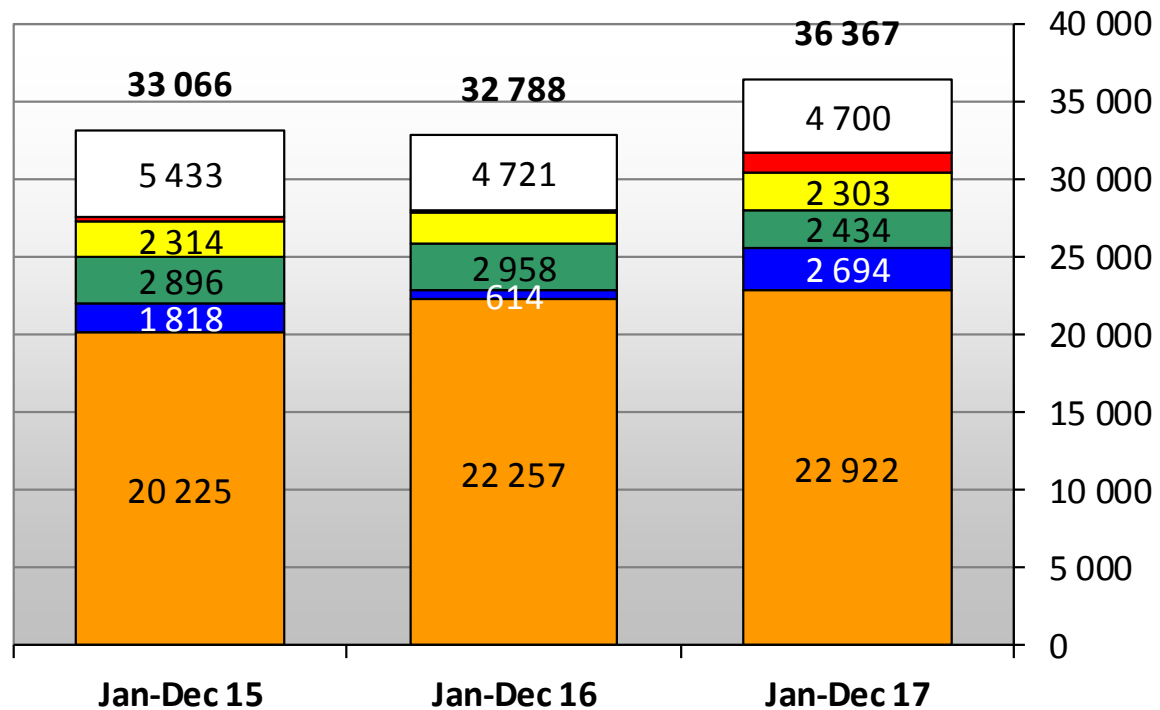
Imports in Tons

Carcase weight	2012		2013		2014		2015		Jan-Dec 17		Compared to Jan-Dec 16
	tonnes	%	tonnes	%	tonnes	%	tonnes	%	tonnes	%	
Switzerland	17 399	50.4%	18 207	51.7%	20 225	61.2%	22 257	67.9%	22 922	63.0%	+ 3.0%
Serbia	3 064	8.9%	3 662	10.4%	1 819	5.5%	614	1.9%	2 694	7.4%	+++
Chile	6 432	18.7%	3 416	9.7%	2 896	8.8%	2 958	9.0%	2 434	6.7%	- 17.7%
Norway	2 202	6.4%	3 192	9.1%	2 315	7.0%	1 977	6.0%	2 303	6.3%	+ 15.8%
USA	1 548	4.5%	1 498	4.2%	1 769	5.3%	1 711	5.2%	1 707	4.7%	- 0.2%
China	212	0.6%	917	2.6%	380	1.1%	250	0.8%	1 315	3.6%	+++
Israel	440	1.3%	450	1.3%	430	1.3%	443	1.4%	443	1.2%	- 0.2%
Thailand	251	0.7%	519	1.5%	582	1.8%	598	1.8%	420	1.2%	- 29.7%
Ukraine	44	0.1%	126	0.4%	0	0.0%	42	0.1%	412	1.1%	+++
Albania	0	0.0%	0	0.0%	79	0.2%	160	0.5%	317	0.9%	+ 97.9%
Canada	89	0.3%	156	0.4%	84	0.3%	174	0.5%	231	0.6%	+ 32.4%
Georgia	0	0.0%	0	0.0%	82	0.2%	168	0.5%	150	0.4%	- 10.4%
Singapore	22	0.1%	106	0.3%	101	0.3%	149	0.5%	136	0.4%	- 8.5%
South Korea	210	0.6%	200	0.6%	186	0.6%	191	0.6%	112	0.3%	- 41.5%
Vietnam	0	0.0%	158	0.4%	0	0.0%	50	0.2%	81	0.2%	+ 62.4%
Hong Kong	27	0.1%	75	0.2%	388	1.2%	0	0.0%	77	0.2%	+++
Philippines	22	0.1%	0	0.0%	0	0.0%	0	0.0%	75	0.2%	+++
Other Destinations	2 525	7.3%	2 564	7.3%	1 731	5.2%	1 039	3.2%	540	1.5%	
Extra-EU	34 487		35 245		33 066		32 779		36 367		
% change			+ 2%		- 6%		- 1%		+ 10.9%		

Source : Estat - Comext



IMPORTS of PIG Meat into EU-28 (Tonnes c. weight)



Meat Market Observatory - Pig

EU Trade of PIG products



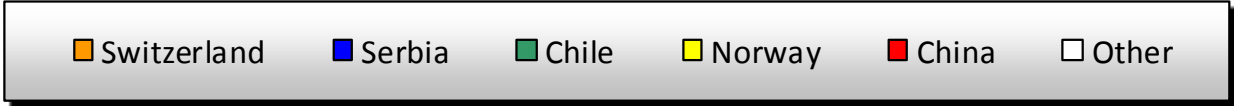
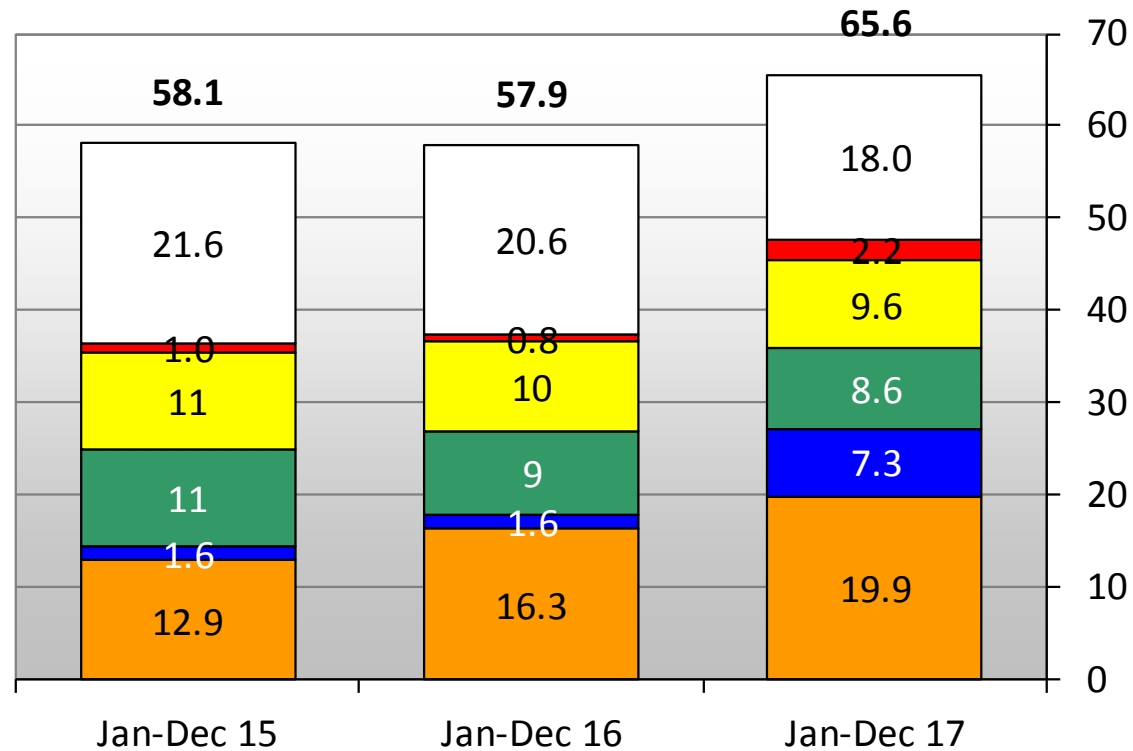
Imports in 1000 EUR

in 1000 EUR	2012		2013		2014		2015		Jan-Dec 17		Compared to Jan-Dec 16
	1000 EUR	%	1000 EUR	%	1000 EUR	%	1000 EUR	%	1000 EUR	%	
Switzerland	14 545	22.5%	14 419	21.7%	12 870	22.2%	16 291	28.1%	19 902	30.3%	+ 22.2%
Norway	10 652	16.4%	13 963	21.1%	10 553	18.2%	9 665	16.7%	9 564	14.6%	- 1.0%
Chile	17 781	27.4%	11 289	17.0%	10 505	18.1%	9 028	15.6%	8 609	13.1%	- 4.6%
Serbia	2 017	3.1%	2 177	3.3%	1 553	2.7%	1 567	2.7%	7 319	11.2%	+++
USA	5 400	8.3%	6 229	9.4%	7 531	13.0%	6 545	11.3%	6 383	9.7%	- 2.5%
Thailand	3 544	5.5%	7 028	10.6%	7 772	13.4%	8 027	13.9%	5 613	8.6%	- 30.1%
Israel	2 125	3.3%	2 172	3.3%	2 231	3.8%	2 227	3.8%	2 298	3.5%	+ 3.2%
China	449	0.7%	1 619	2.4%	997	1.7%	780	1.3%	2 172	3.3%	+ 178.4%
Canada	457	0.7%	591	0.9%	390	0.7%	696	1.2%	1 007	1.5%	+ 44.6%
Singapore	41	0.1%	185	0.3%	179	0.3%	350	0.6%	286	0.4%	- 18.2%
Mexico	0	0.0%	2	0.0%	0	0.0%	117	0.2%	266	0.4%	+ 126.6%
Ukraine	60	0.1%	113	0.2%	1	0.0%	43	0.1%	253	0.4%	+++
Japan	2 742	4.2%	3 518	5.3%	621	1.1%	693	1.2%	215	0.3%	- 68.7%
South Korea	540	0.8%	462	0.7%	492	0.8%	525	0.9%	183	0.3%	- 65.2%
New Zealand	1	0.0%	1	0.0%	0	0.0%	283	0.5%	177	0.3%	- 37.3%
Albania	0	0.0%	0	0.0%	31	0.1%	70	0.1%	149	0.2%	+ 113.0%
Taiwan	41	0.1%	113	0.2%	661	1.1%	1	0.0%	134	0.2%	+++
Other Destinations	4 391	6.8%	2 442	3.7%	1 701	2.9%	1 044	1.8%	1 071	1.6%	
Extra-EU	64 787		66 324		58 089		57 950		65 600		
% change			+ 2%		- 12%		- 0%		+ 13.2%		

Source : Estat - Comext

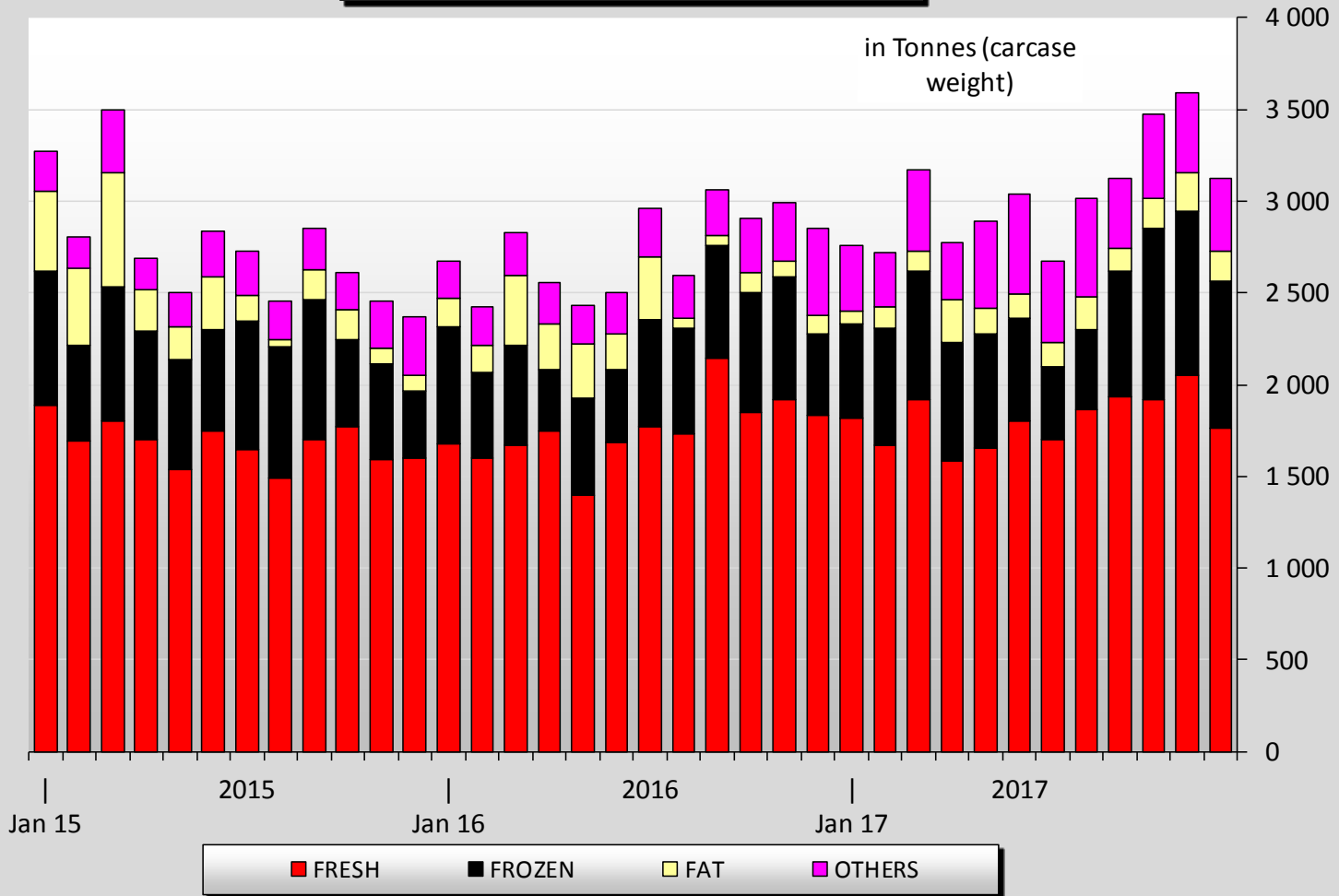


IMPORTS of PIG Meat into EU-28 (Millions EUR)



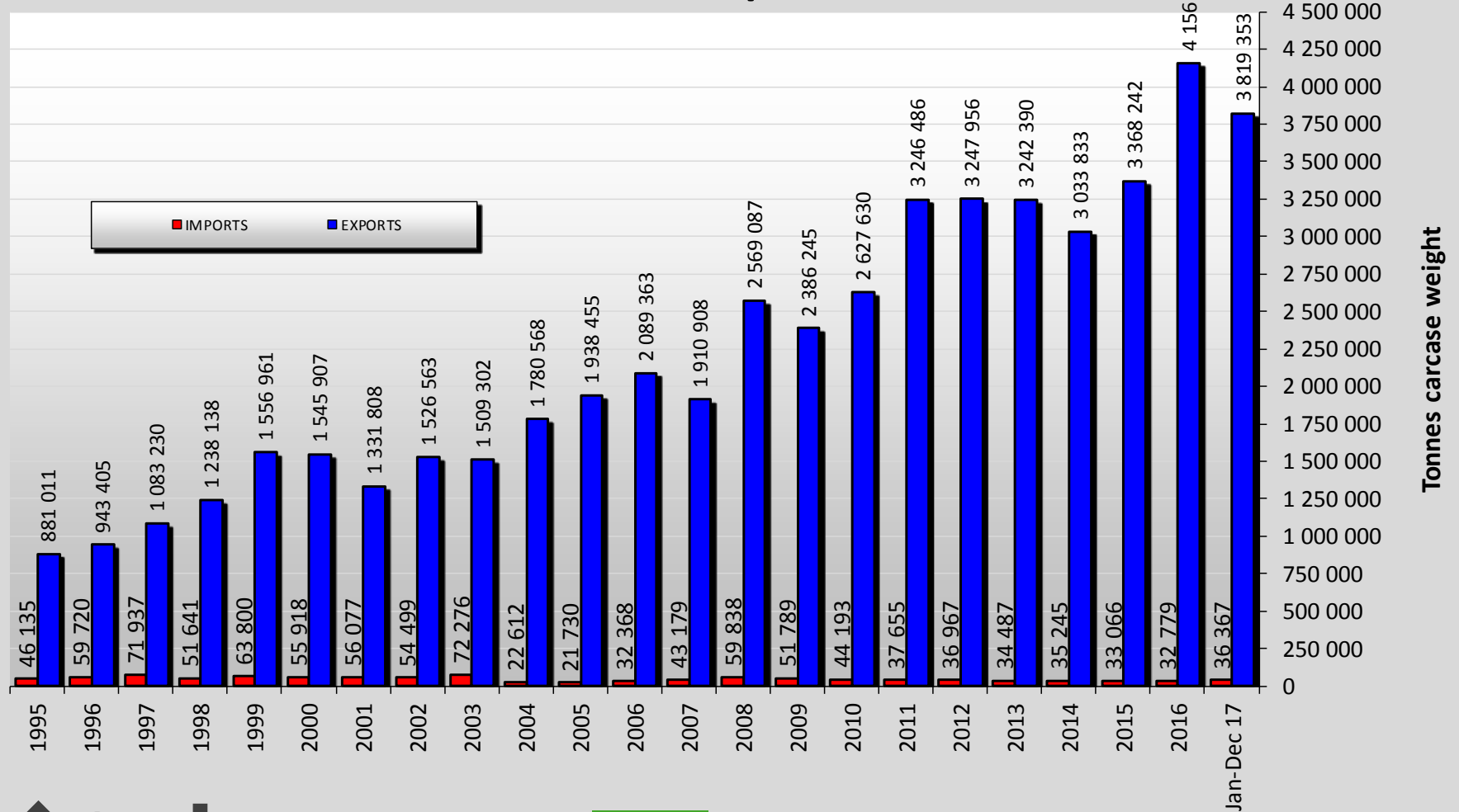


Imports of selected PIG products





EU Trade of PIG products





EU Trade of PIG products

